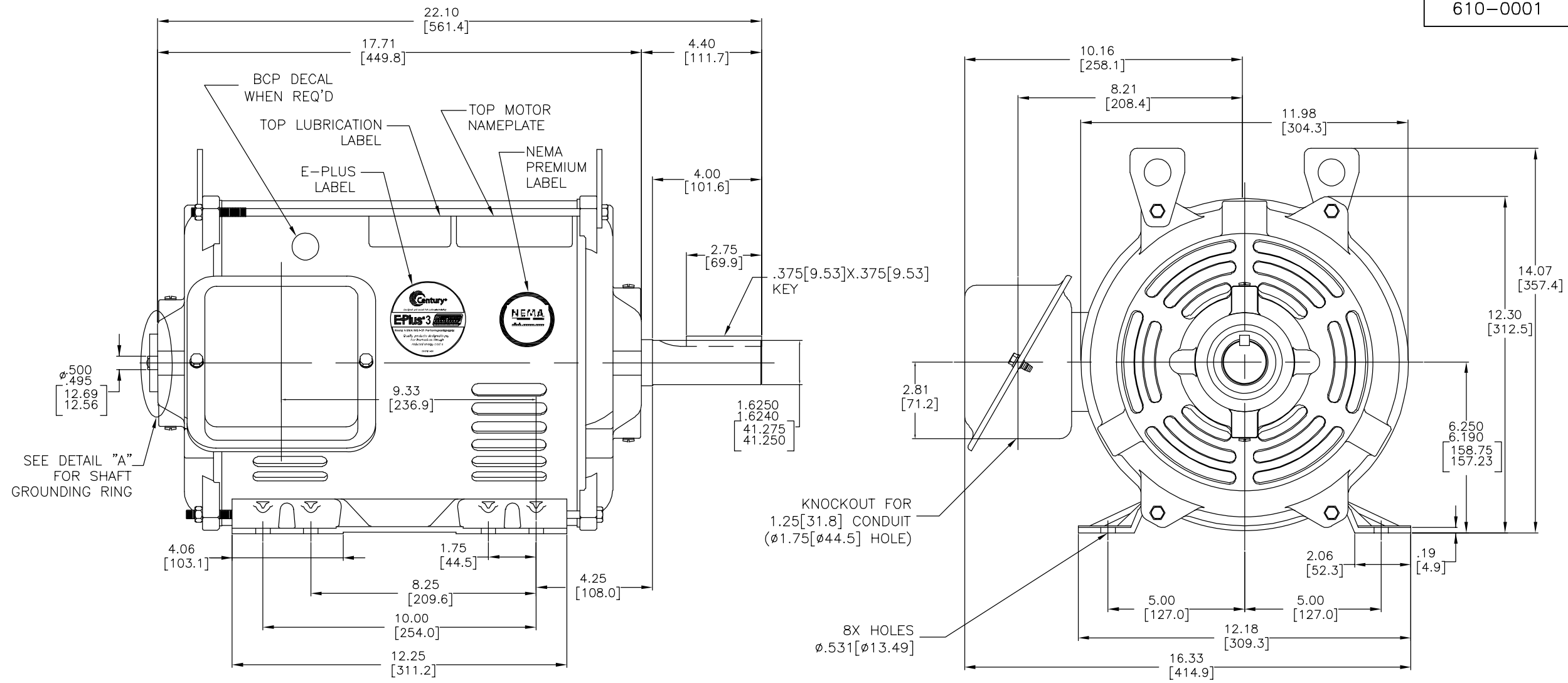


610-0001

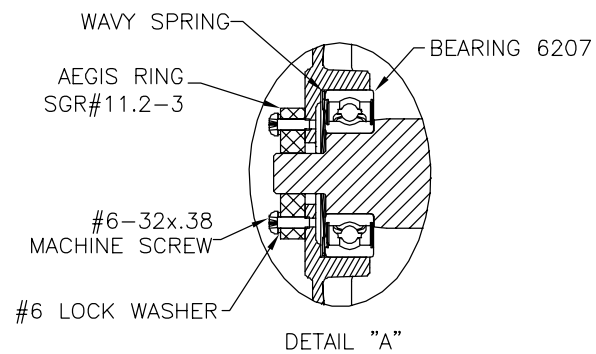


NOTES:

1. CONDUIT BOX MAY BE ROTATED IN 90° INCREMENTS.
2. MOTOR IS SUITABLE FOR FIELD CONVERSION FROM AN F1 TO AN F2 CONDUIT BOX LOCATION.
3. MOTOR VENTILATION: AIR INTAKE THROUGH OPENINGS IN THE FACE OF EACH BRACKET AND EXHAUSTED THROUGH THE VENT SLOTS ON EACH END OF THE SHELL.

MOTOR DESCRIPTION:

3 PHASE OPEN DRIPPROOF STEEL SHELL 254T OR 256T MOUNTING. OTHER MOUNTING ORIENTATIONS ARE ACCEPTABLE; HOWEVER WHEN MOUNTED OTHER THAN HORIZONTAL; MOTOR WILL NOT BE DRIPPROOF AS DEFINED BY NEMA.



		TOLERANCES UNLESS SPECIFIED		REGAL-BELOIT CORPORATION		DRAWN UD 07/25/13				
		DEC.	INCHES	REGAL-BELOIT CORPORATION		CHK	SR 07/25/13			
		.X	±0.1	TITLE		APPD				
		.XX	±0.02	OUTLINE - SGR ODE		SCALE	NTS			
		.XXX	±0.005	MODEL - IHP		REF	18748501-001			
01	BCP DECAL ADDED	PVR 01/28/15	ST	.XXXX	±0.0005	MAT'L.	FMF			
NO.	REVISION	BY & DATE	CHK	ANG	±1	FINISH	PREV			
THIS DRAWING IN DESIGN AND DETAIL IS OUR PROPERTY AND MUST NOT BE USED EXCEPT IN CONNECTION WITH OUR WORK ALL RIGHTS OF DESIGN AND INVENTION ARE RESERVED THIS IS AN ELECTRONICALLY GENERATED DOCUMENT - DO NOT SCALE THIS PRINT				RFP		CAD FILE	610-0001	SIZE	DRAWING NO.	REV.
				DIST				B	610-0001	01